



Village scene, by S.G. Vasudev.

EXCAVATING THE PAST

Photos & text: NGMA, Mumbai

S.G. Vasudev, a leading modernist of post-Independence India, is showcasing a retrospective of 60 years of his work at the National Gallery of Modern Art, Mumbai.

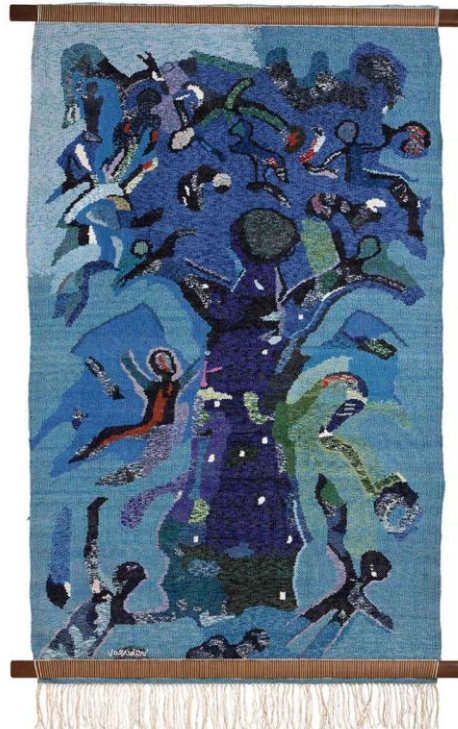
Vasudev's work takes us into the thick of the debates and turmoil of the Sixties within the College of Art, Madras, are pioneering centre for arts education that has received the least critical attention from our art historians. The products of the Madras art movement have, thus, remained confined to the margins of the narrative around mainstream Indian art.

The retrospective of any artist who has consistently been at work for over five decades, is no longer about the artist per se. It also becomes the narrative of a nation, a region, a school, a style. Vasudev's retrospective, then, becomes an occasion for an archaeological exploration into the multiple layers of social, historical and aesthetic accumulation that reveal themselves, as clearly as strata in stone.

The exhibition, *Inner Resonance*, is on view at NGMA, Mumbai till 11 August 2019



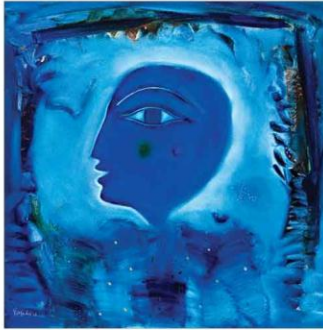
Tree of Life, by S.G. Vasudev.



Tree and Monkeys, by S.G. Vasudev.



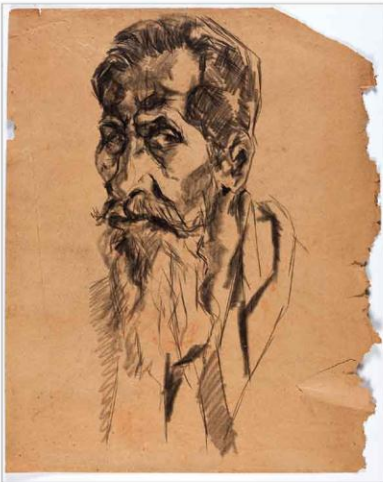
She and Man, by S.G. Vasudev.



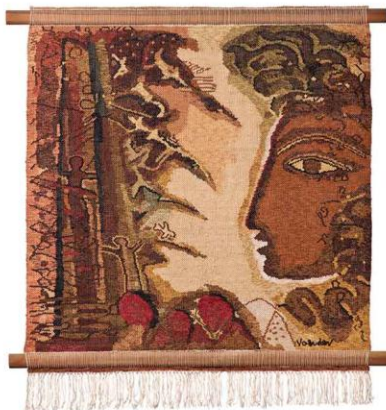
Theatre of Life, by S.G. Vasudev.



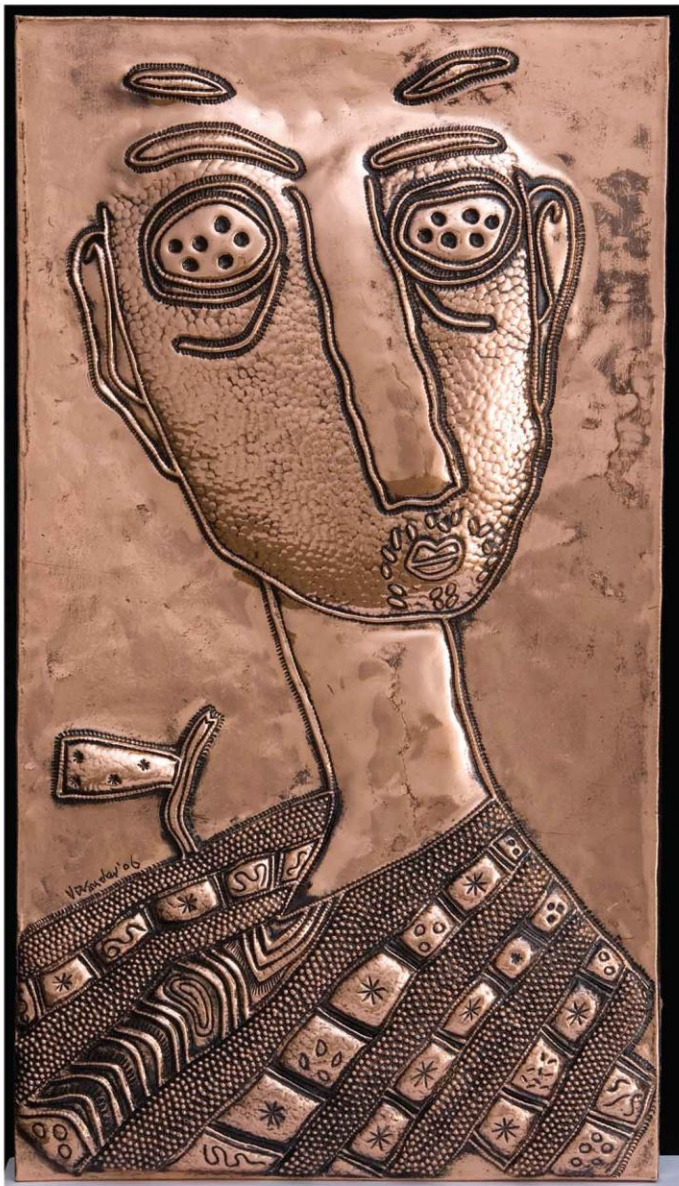
Earthscape, by S.G. Vasudev.



Portrait, by S.G. Vasudev.



She & Tree Tapestry in Silk, by S.G. Vasudev.



HE Copper Relief, by S.G. Vasudev.